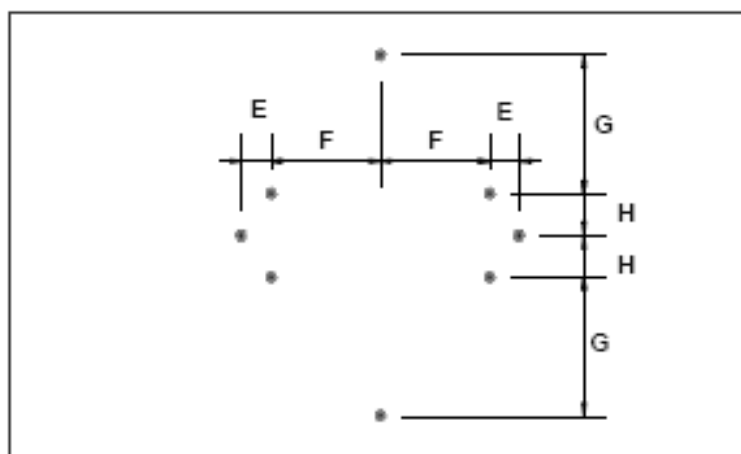
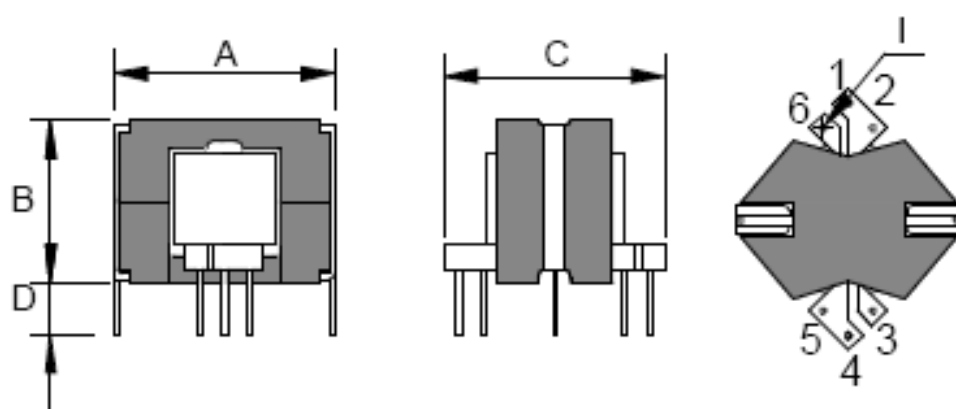


RM6 - 6 pinos



TOLERÂNCIA: $\pm 0,5\text{mm}$.

AL: $5000\text{nH} +30 / -20\%$

ÁREA ÚTIL DA JANELA: $9,0\text{mm}^2$

CARRETEL	A	B	C	D	E	F	G	H	I
RM6 - 6 pinos	19,3	12,5	20,0	3,2	1,8	7,3	7,3	2,0	0,6